



Supply List

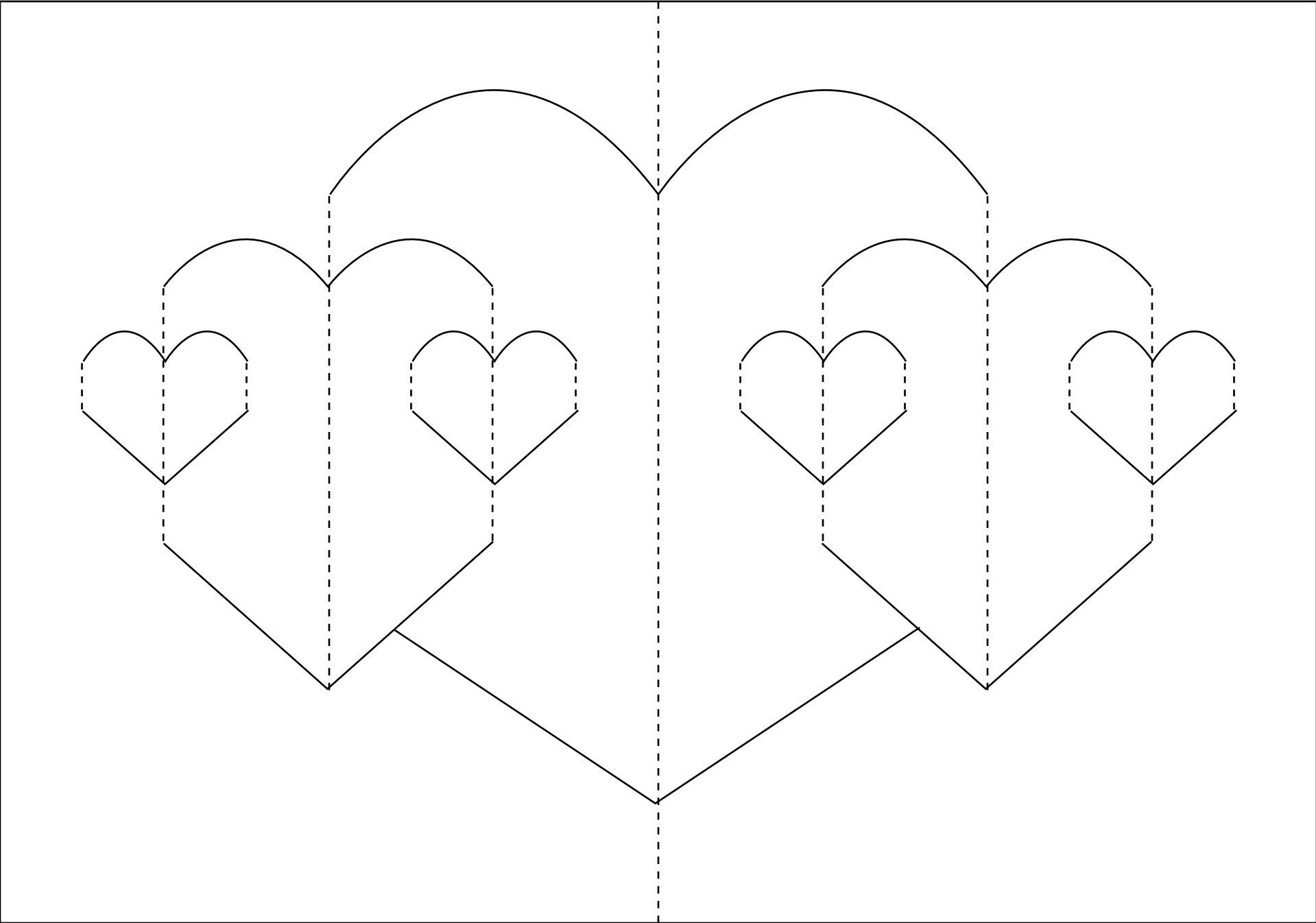
VALENTINES POP-UP CARD WORKSHOP

- X-Acto #1 knife
- X-Acto #1 knife blades (#11)
- Scissors
- Bone folder
- 12" metal straight edge or ruler
- 9" x 12" cutting mat
- 8+ Sheets of red/pink card stock (8.5" x 11" or larger)
- 8+ Sheets of assorted decorative paper (8.5" x 11" or larger)
- Decorative twine
- Glue stick
- Scotch tape
- Scrap paper (for gluing)
- Pencil

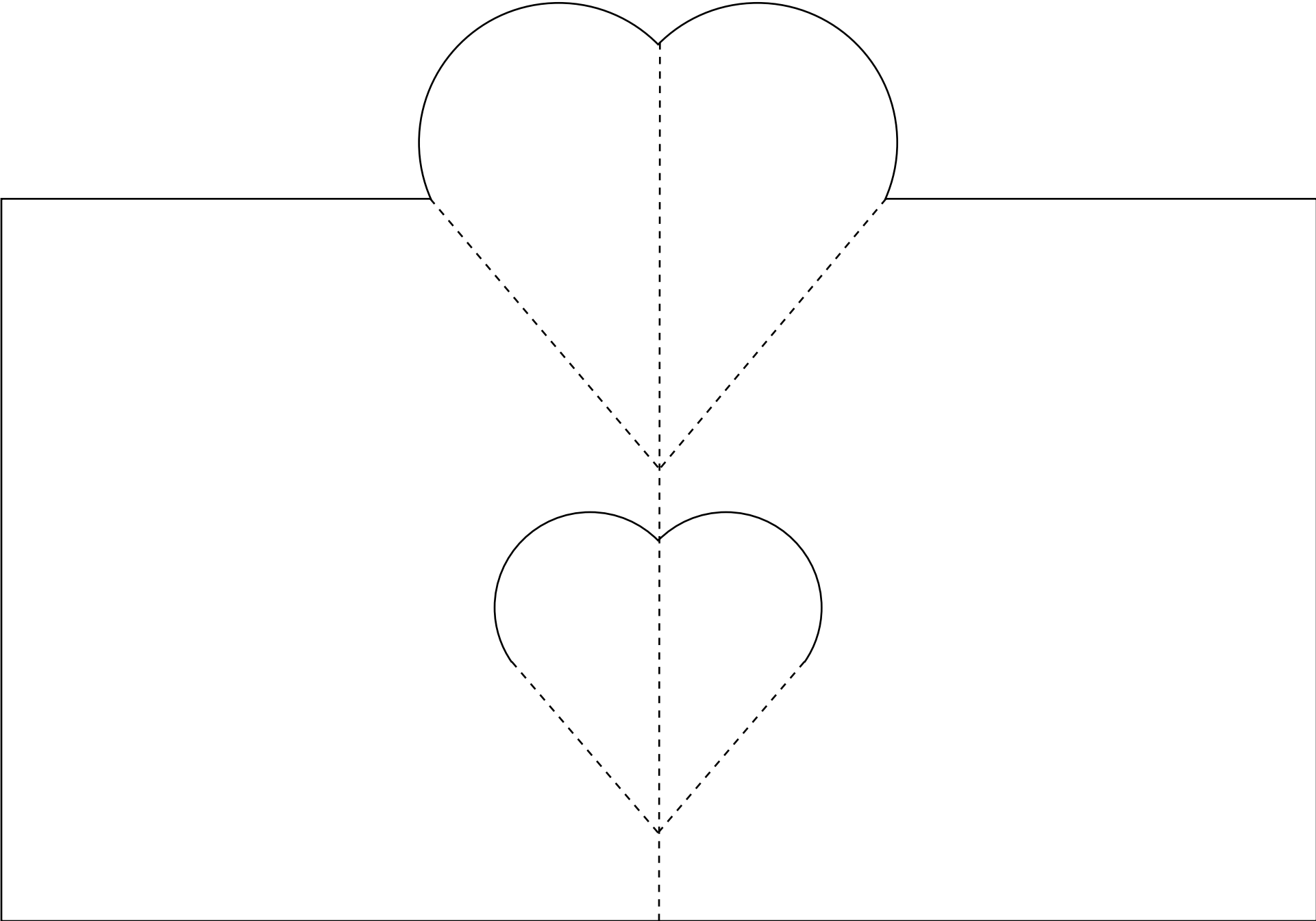
OPTIONAL

- Decorative stickers
- Decorative punches
- Decorative paper edges scissors

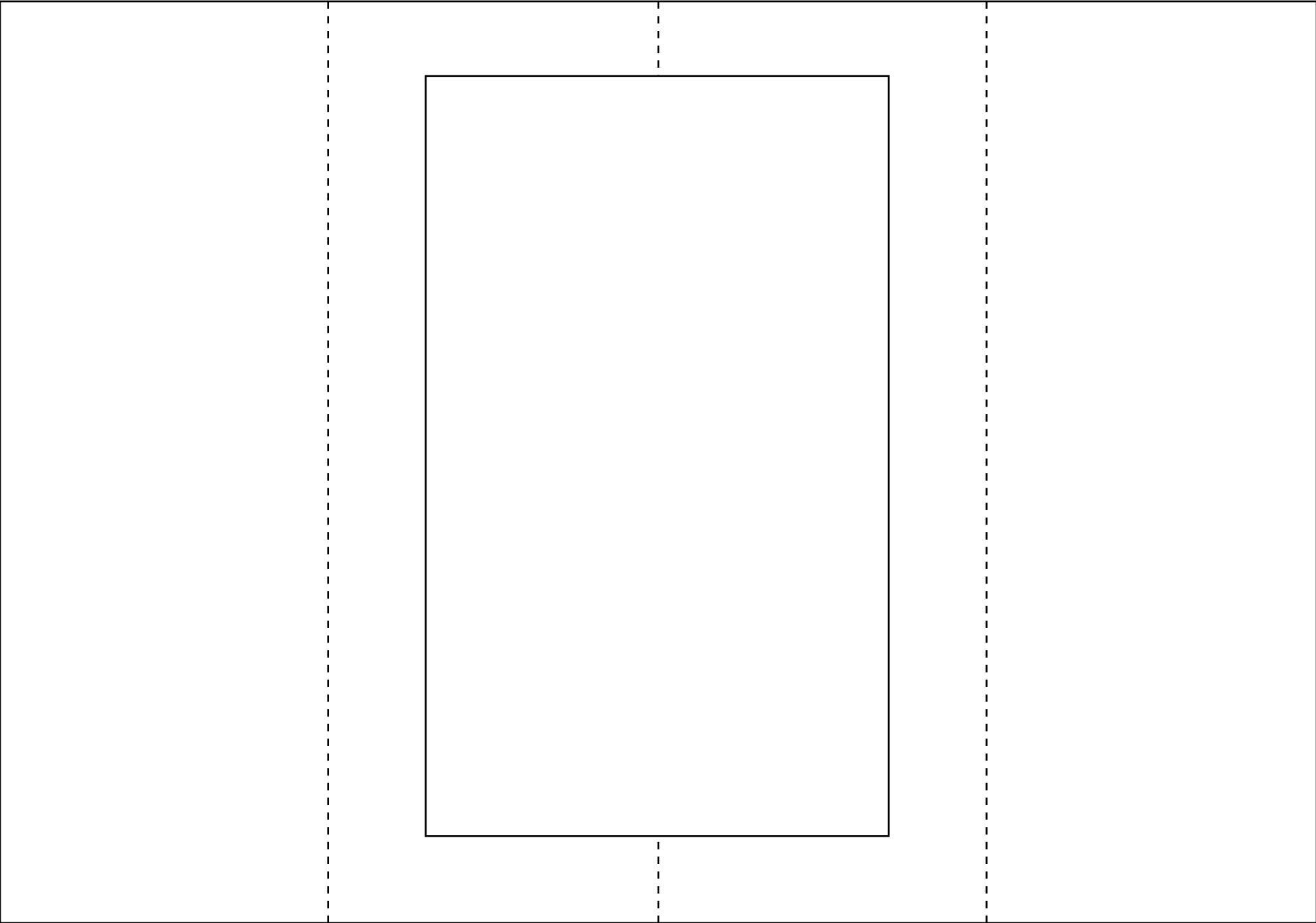
7 HEARTS POP-UP CARD: 10 x 7 flat / 5 x 7 folded



2 HEARTS POP-UP CARD: 10 x 7 flat / 5 x 7 folded



SUSPENDED HEARTS POP-UP CARD: 10 x 7 flat / 5 x 7 folded



SPIRAL HEARTS POP-UP CARD: 10 x 7 flat / 5 x 7 folded

