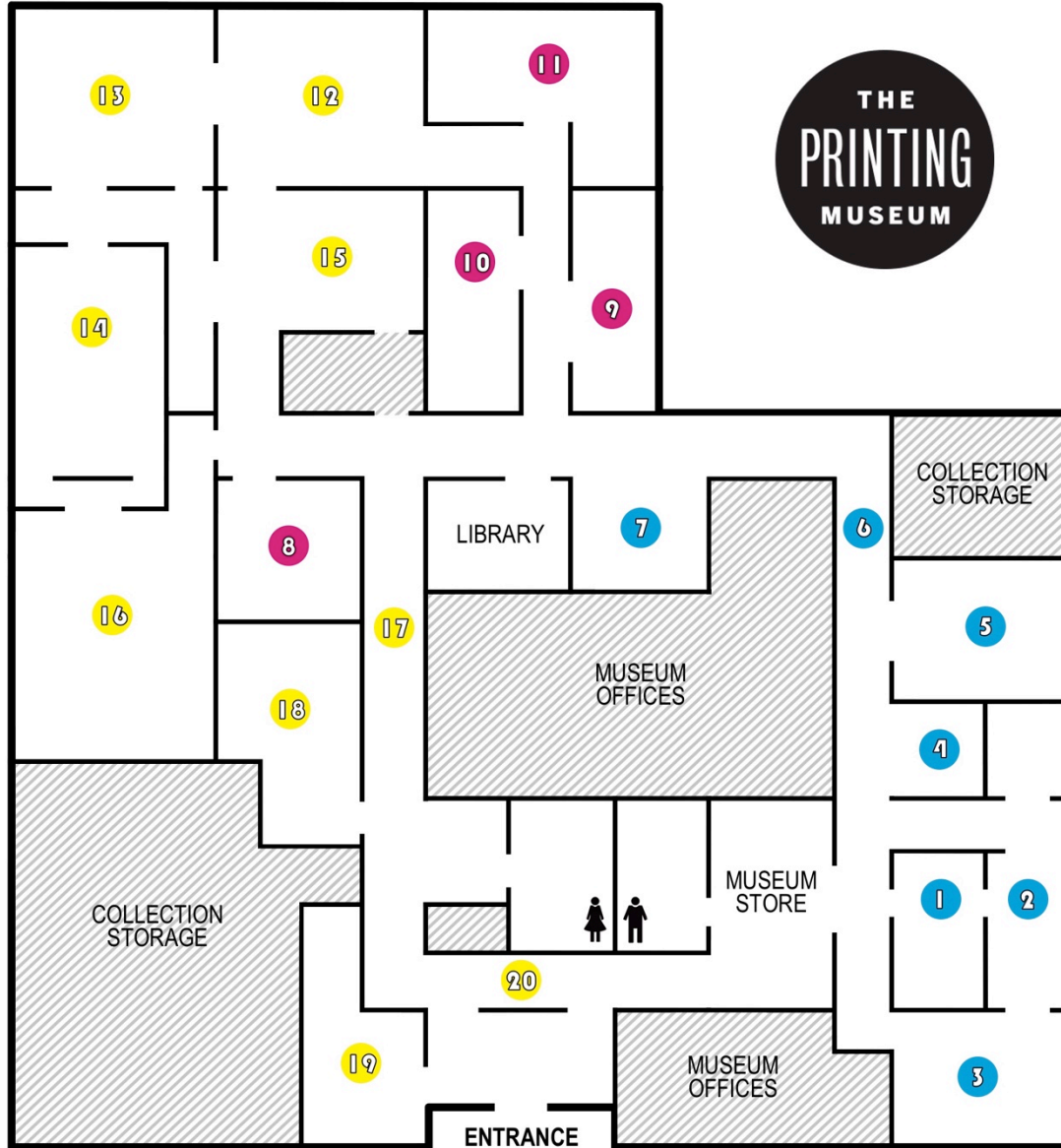


W. Dallas St.

Peveto St.



W. Clay St.

PERMANENT COLLECTION

1. EARLY COMMUNICATION

Rosetta Stone Casting
Hyakumanto Dharani Scroll
Book of Kells

2. GUTENBERG AND RENAISSANCE

Gutenberg Bible
Gutenberg Press
Albrecht Dürer's Woodcut Print

3. PRINTING IN EARLY AMERICA

Benjamin Franklin & *Pennsylvania Gazette*
Harper's Weekly & Thomas Nast
The Declaration of Independence
Columbian Press

4. MEXICO, TEXAS AND THE REVOLUTION

Albion Press

5. HEARST GALLERY

Cranston Drum Cylinder Press
Linotype Machine
Houston Chronicle Stereotype

6. HISTORIC HEADLINES

7. MODERN OFFICE TECHNOLOGY

First XEROX Machine
Apple Macintosh Computer

ARTIST STUDIOS

8. BOOKBINDING

10. PAPERMAKING

9. MASTER PRINTER

11. LETTERPRESS

EXHIBITION GALLERIES

12. BURNHAM GALLERY

16. TYPE GALLERY

13. EATON GALLERY

17. HALL GALLERY

14. THEATER

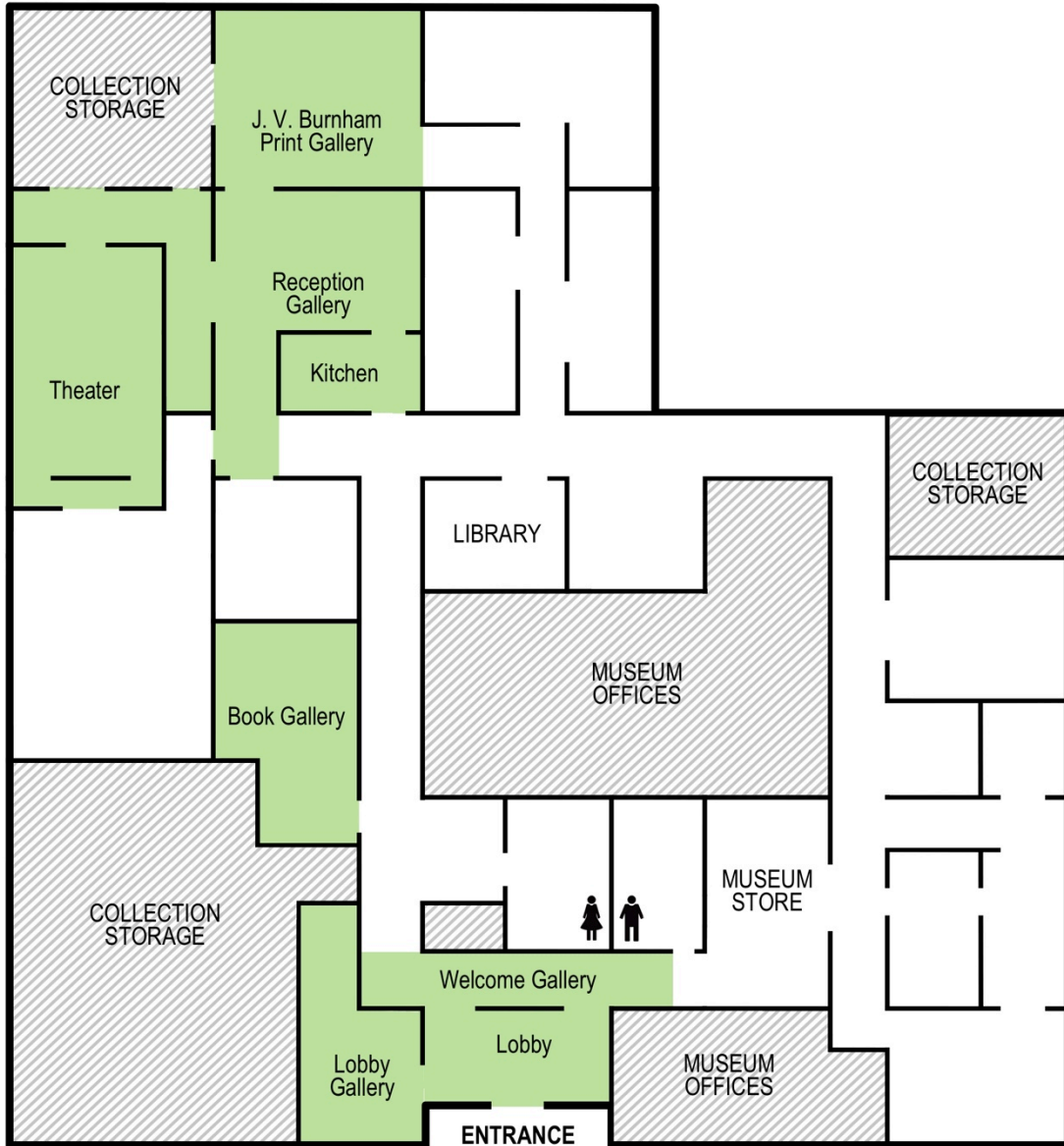
18. BOOK GALLERY

15. RECEPTION GALLERY

19. LOBBY GALLERY

20. WELCOME GALLERY

MUSEUM
PARKING



Areas Available for Rental

1. Lobby Gallery
2. Book Gallery
3. Burnham Gallery
4. Theater

Additional Facilities

1. Welcome Gallery & Lobby
2. Reception Gallery
3. Kitchen

Welcome Gallery

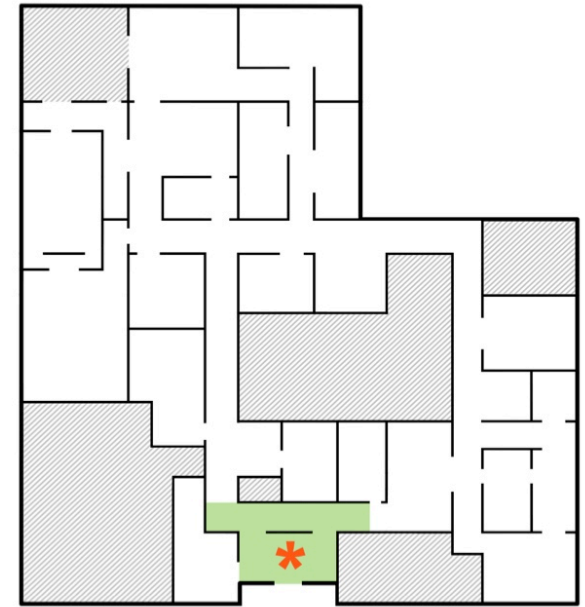
Ideal for mix & mingle receptions –or– as a special area for appetizers/desserts as part of a larger event rental.

Capacity: up to 11 round cocktail tables*
(30" d. 42" h. 2-3 persons standing)

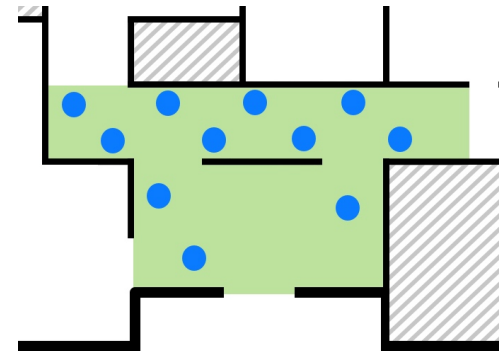
23'8" x 15'4" = 355 sq. ft.

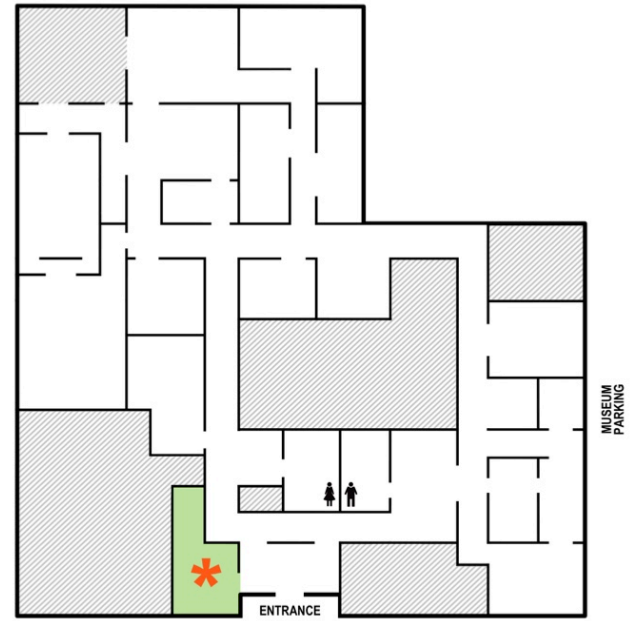
\$ 225 for 3 hours

** We do not currently stock cocktail tables but can recommend excellent outside sources.*



Sample Table Layout





Lobby Gallery

Capacity:

15~20 persons in boardroom setting
30 persons at round table setting

17.5' x 28' = 482 sq. ft.
\$265 for 3 hours



Book Gallery

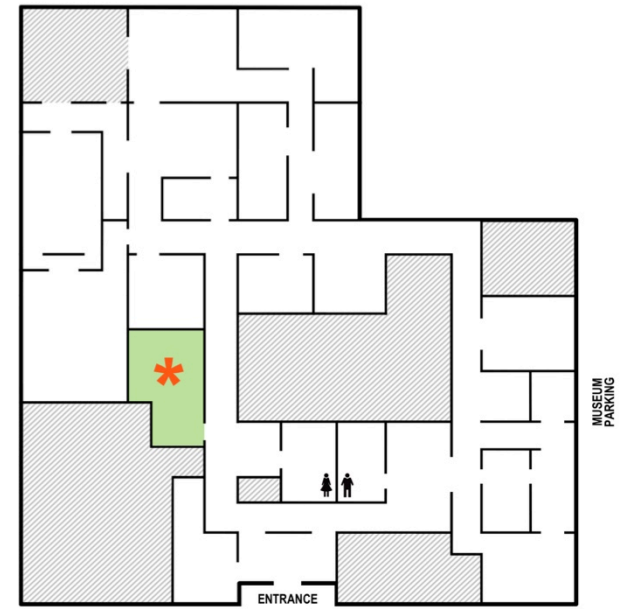
Capacity:

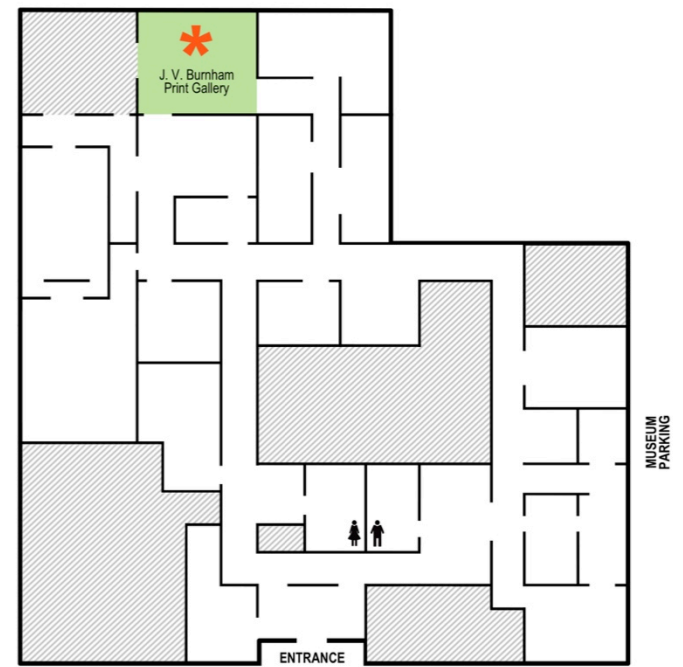
4 x 60" tables (9 persons) = 36 persons seated
OR

Conference room style for 12-18 persons

585 sq. ft.

\$ 265 for 3 hours





Burnham Gallery

Capacity: 45 persons seated

5 x 60" tables (9 persons) = 45 persons

120 persons standing

75 persons in assembly seating

326.5' x 25' = 675 sq. ft.

Burnham Gallery only

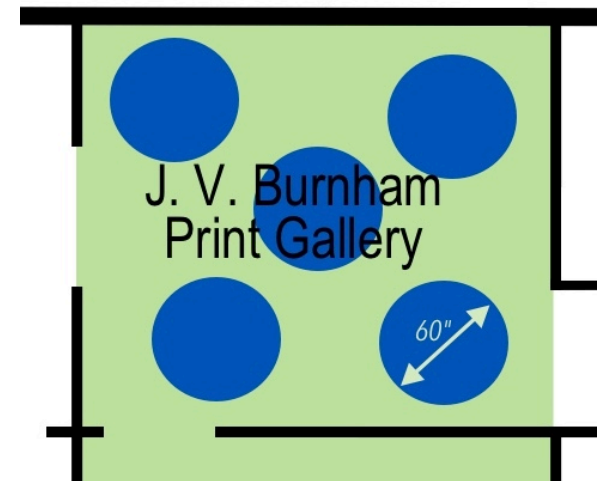
\$ 400 for 3 hours

Burnham, Reception Galleries

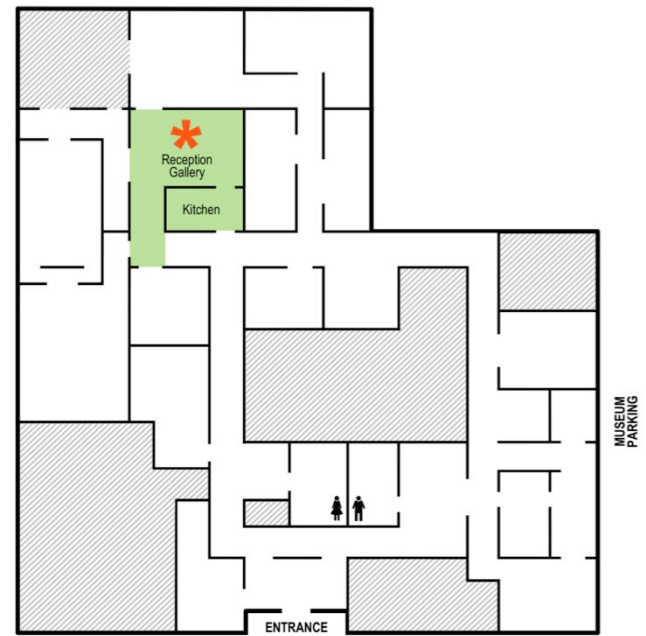
\$ 565 for 3 hours

with kitchen access

Sample Table Layout





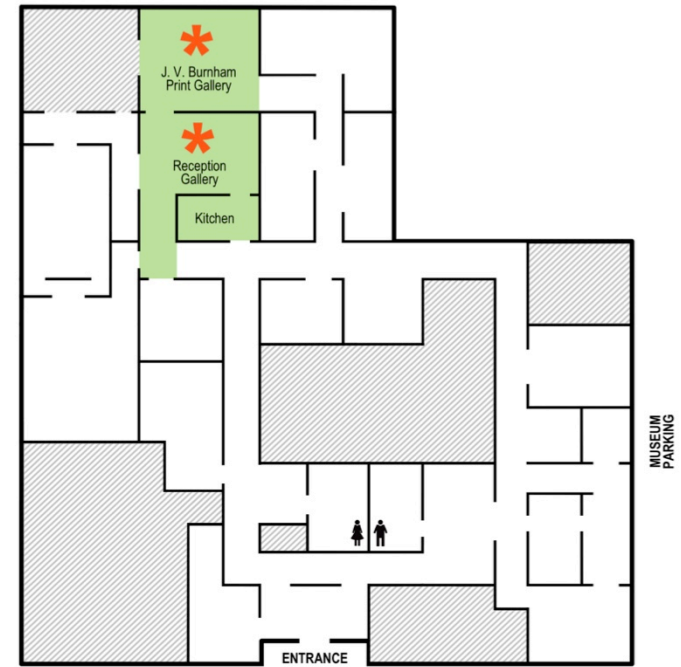


Reception Gallery

2 x 60" tables = 18 persons
or 3 buffet tables

21'9" x 16'10" = 366 sq. ft.

With Kitchen access
Not rented separately



Burnham & Reception Galleries

Capacity: 63 persons seated

5 x 60" tables in Burnham = 45 persons

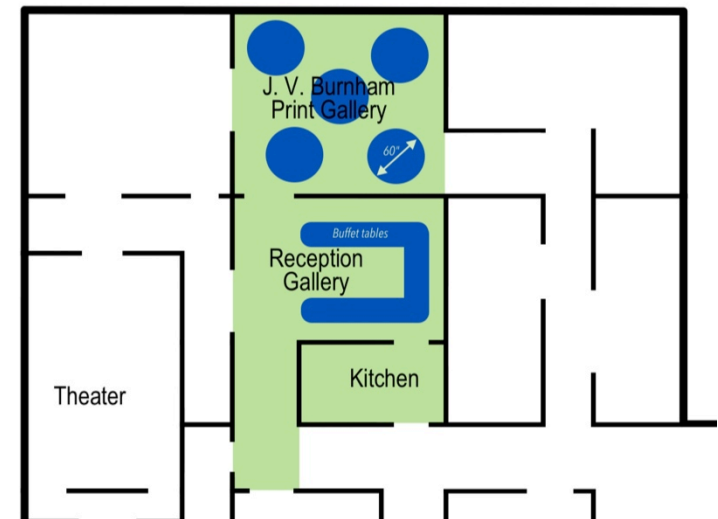
2 x 60" tables in Reception = 18 persons

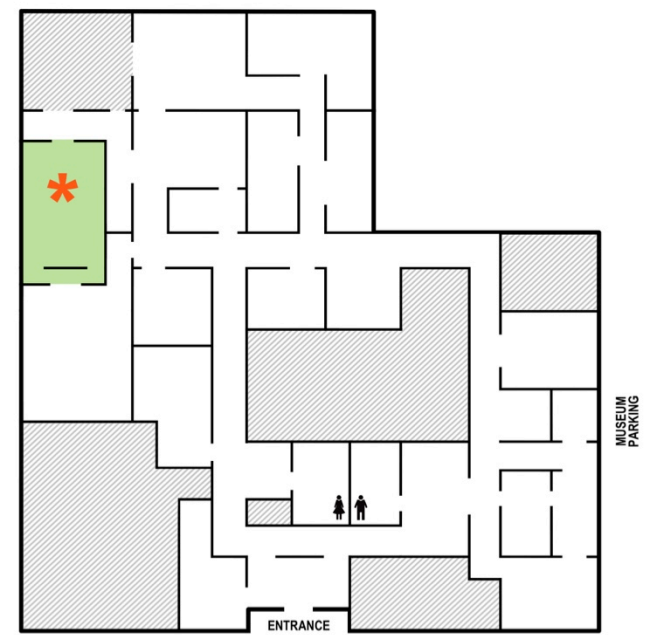
120 persons standing

Burnham Gallery only \$ 400 for 3 hours

Burnham, Reception Galleries \$ 565 for 3 hours
with kitchen access

Sample Table Layout



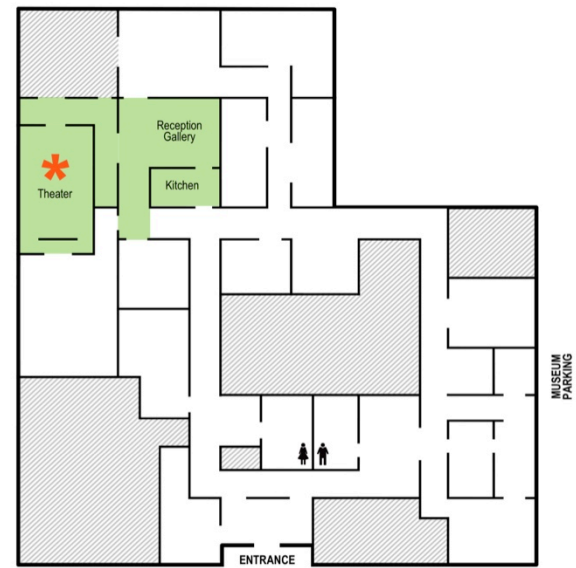


Theater

Capacity: 65 persons
38.5' x 21.5' = 830 sq. ft.

Theater only \$ 335 for 3 hours

Includes use of a digital projector,
DVD player, and podium.



Theater & Reception Galleries

Capacity: 65 persons in theater
38.5' x 21.5' = 830 sq. ft.

Theater with \$ 500 for 3 hours
Reception Gallery
and Kitchen access

Includes use of a digital projector,
DVD player, and podium.

